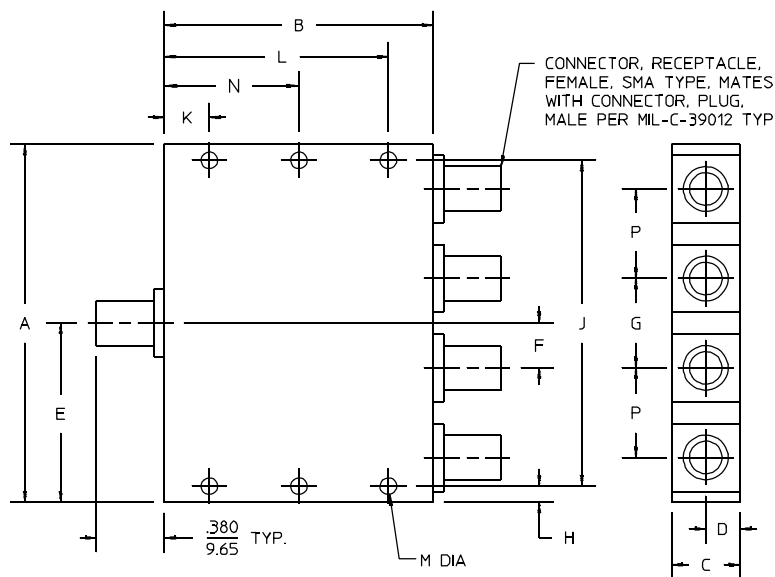




PRINCIPAL SPECIFICATIONS

Model Number	Freq. Range, GHz	Isolation, dB, Min.	Insertion Loss, dB, Max.	Phase Bal., Max.	Amplitude Bal., dB, Max.	VSWR, Max., In	VSWR, Max., Out	CW Input Power, Max., 1.2:1	CW Input Power, Max., with VSWR _{out} ∞	Outline Dwg Ref.
PDM-45R-9.2G	0.5 - 18.0	16	4.0	10°	1.0	1.70:1	1.45:1	30 W	1 W	6
PDM-45R-16G	6.0 - 26.5	15	2.1	10°	0.5	1.70:1	1.60:1	30 W	1 W	5

Package Outline



OUTLINE	A	B	C	D	E	F	G	H	J
5	2.750 69.85	1.500 38.10	.384 9.75	.192 4.88	1.375 34.92	.625 15.88	1.250 31.75	.090 2.29	2.570 65.28
6	3.500 88.90	8.750 222.25	.500 12.70	.250 6.35	1.750 44.45	.980 24.89	1.960 49.78	.156 3.96	3.188 80.98

- NOTES:
1. Tolerance on 3 place decimals ± 0.020(.51) except as noted.
 2. Dimensions in inches over millimeters.
 3. Weights are nominal on all outlines.

OUTLINE	K	L	M	N	P	WT. OZ. (G)
5	.750 19.05	—	.103/.108 (2.62/2.74) DIA. THRU, 2 HOLES	—	.500 12.70	4.0 (113)
6	1.125 28.58	7.625 193.68	.134/.154 (3.40/3.91) DIA. THRU, 6 HOLES	4.375 111.12	.520 13.21	20.0 (565)

GENERAL SPECIFICATIONS

Impedance: 50 Ω nom.
 Operating Temperature: -55° to +85°C

General Notes:

1. The PDM-45R series of 4-way, In-Phase Power Dividers/Combiners covers 0.5 to 26.5 GHz. Each circuit uses a specially developed stripline design providing high isolation and low VSWR over broad operating bands.
2. The stripline circuits are encased in a miniature machined housing that minimizes moding and provides an effective RF shield.
3. These units are generally available from catalog stock for fast delivery.

27Mar96