



CSM-20-8G SQ DIRECTIONAL COUPLERS

REV: 007, 03/21/01

- SPACE QUALIFIED
- 4 - 12.4 GHz DIRECTIONAL COUPLER



TECHNICAL DESCRIPTION / APPLICATION

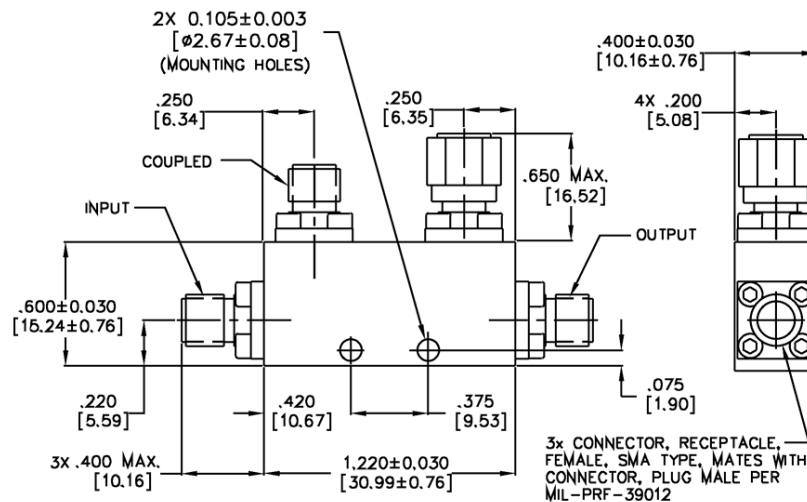
SERIES 05

The CSM-20-8G SQ Directional Coupler covers 4-12.4 GHz with a stripline design. This offers low transmission loss and excellent VSWR. This unit has been designed, manufactured and qualified per Merrimac document CENG-0001, "Standard Design Requirements for Space Qualified Devices".

GENERAL SPECIFICATIONS

MODEL NUMBER	FREQUENCY RANGE GHz	COUPLING dB	INSERTION LOSS dB MAX.	DIRECTIVITY dB MIN.	VSWR MAIN, MAX.
CSM-20-8G SQ	4 - 12.4	20 +/- 1.0	0.45	17	1.25:1
VSWR COUPLED, MAX.	FREQUENCY SENSITIVITY dB MAX.	CW POWER RATING MAIN LINE			WEIGHT
1.25:1	+/- 0.4	30 WATTS			1.23 oz.

PACKAGE OUTLINE



NOTES:

1. TOLERANCE ON 3 PLACE DECIMALS ±.020 [.51mm] EXCEPT AS NOTED.
2. MAX. IS LARGEST DIMENSION ALLOWED.
3. DIMENSIONS=INCHES [mm]
4. METRIC EQUIVALENTS ARE TO THE NEAREST .01mm.
5. WEIGHT: 1.23 OZ. [35g] MAX.