

TECHNICAL DESCRIPTION

FEATURES

- 2.0 - 2.3 GHz
- LOW LOSS
- LOW VSWR
- HIGH POWER
- HIGH DIRECTIVITY
- SURFACE MOUNT
- TAPE & REEL

APPLICATIONS

- WCDMA BASE STATION RF SUBSYSTEMS
- UMTS
- SATCOM



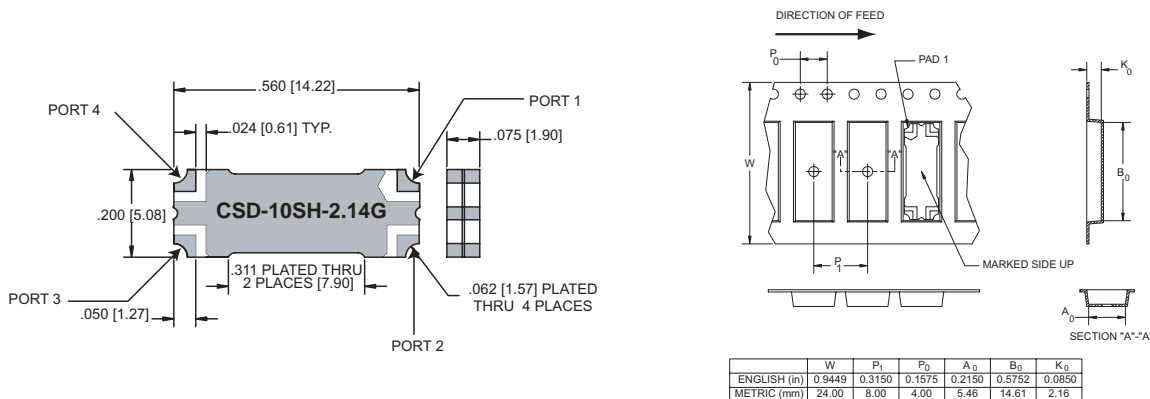
The Multi-Mix[®] CSD-SH series provides a 10 dB coupler with low insertion loss, low VSWR, and high directivity. Accurate coupling factors make them ideal for applications involving power amplifiers, signal distribution and processing.

CSD-SH Directional Couplers are fusion bonded multilayer stripline assemblies. The fusion bonding process yields a homogeneous monolithic dielectric structure with reliability, ruggedness, and electrical performance that is superior to conventional adhesive bonding techniques.

GENERAL SPECIFICATIONS

| FREQUENCY RANGE GHz | | MEAN COUPLING | INSERTION LOSS (dB MAX) | VSWR (MAX) | FREQUENCY SENSITIVITY (dB MAX) |
|--------------------------|-------------|---------------------|----------------------------|---------------|-----------------------------------|
| 2.0 - 2.3 | | 10.0 ± 1.0 dB | 0.20 | 1.19:1 | ± 0.10 |
| DIRECTIVITY (dB, MIN) | INPUT POWER | SIZE (INCHES) | WEIGHT (OZ./GRAMS) | RF INTERFACE | OPERATING TEMPERATURE |
| 20 | 100 W | 0.56 x 0.20 x 0.075 | 0.02 / 0.6 | Surface Mount | -55° - +85° C |

PACKAGE OUTLINE / TAPE & REEL ORIENTATION

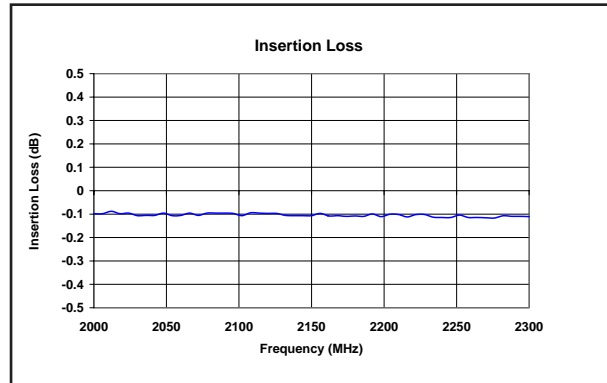
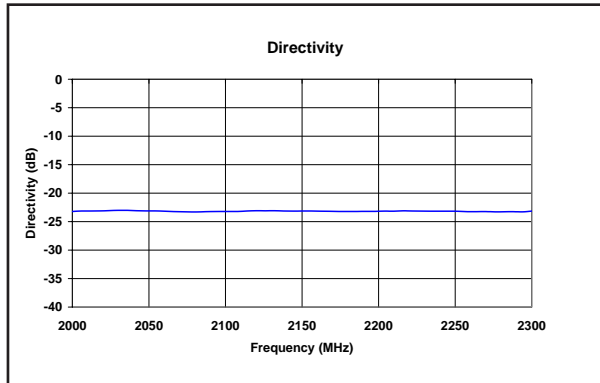
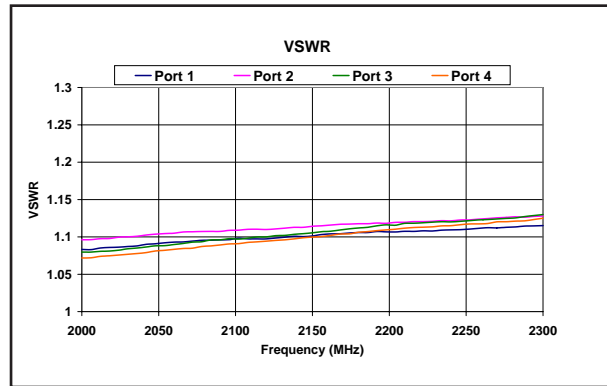
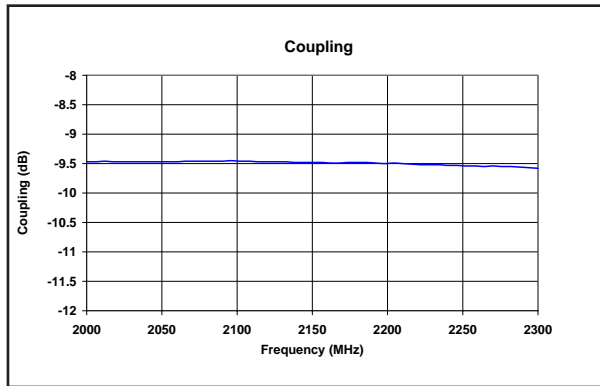


THE MULTI-MIX MICROTECHNOLOGY[®] GROUP IS ISO 9001:2000 REGISTERED

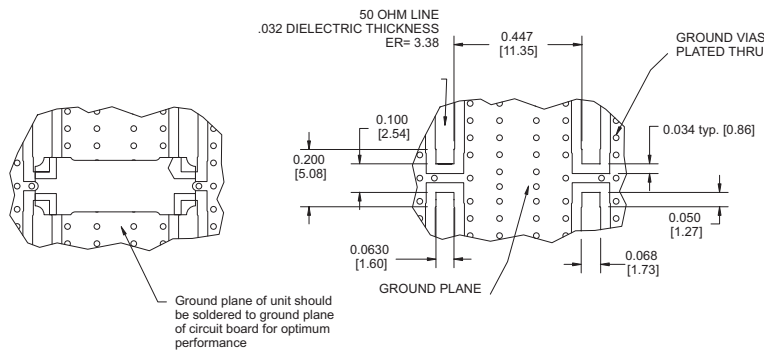


U.S. Patent 6,099,677 and other Patents Pending.

TYPICAL PERFORMANCE



MOUNTING CONFIGURATION



TRUTH TABLE

| | 1 | 2 | 3 | 4 |
|---|----------|----------|----------|----------|
| 1 | Input | Coupled | Isolated | Out |
| 2 | Coupled | In | Out | Isolated |
| 3 | Isolated | Out | Input | Coupled |
| 4 | Out | Isolated | Coupled | Input |